



TONGLI 通力

理念

PHILOSOPHY

通力使命 / Mission

与员工共同成长，与客户共同进步，与社会共同发展
Growing up with employee together; Progressing
with clients together; Developing with the society together.

通力目标 / Prospective

成为传动领域最具竞争力的标杆企业
To become a top enterprise in transmission field with
the most competitive power.

通力愿景 / Vision

成为一家受人尊敬的、具有持续成长能力的健康企业
To become a success enterprise which be respected
and with an ability of sustainable development.

通力精神 / Spirit

诚信 创新 敬业 和谐 感恩
Trust Innovation Dedication Harmony Grateful

CONTENTS

目录

中国驰名商标
CHINA WELL-KNOWN TRADEMARK

国家高新技术企业
STATE HIGH-TECH ENTERPRISE

浙江省著名商标
FAMOUS BRAND OF ZHEJIANG PROVINCE

浙江省名牌产品
FAMOUS PRODUCT OF ZHEJIANG PROVINCE

概况

- 04 成长历程 Growth process
- 06 企业简介 Brief introduction
- 08 亲切关怀 Earnest concern
- 12 企业荣誉 Great honors

科技

- 18 技术创新 Technical innovation
- 20 智力合作 Intellectual cooperation

文化

- 24 企业文化 Enterprise culture
- 26 创新管理 Innovation management
- 30 交流合作 Exchanges and cooperation

设备

- 34 生产设备 Production equipment
- 36 检测设备 Testing equipment

产品

- 40 模块组合 Modularization combination
- 42 标准产品 Standardized products
- 46 专用产品 Specializing products
- 50 市场推广 Marketing promotion
- 52 应用领域 Application fields

展望

- 56 展望未来 Future prospects

TONGLI 通力

概况

INTRODUCTION CHAPTERS

求木之长
则要固其本
通力的成长
述说了—个生命力
从厚积到薄发的品牌传奇。

1月成立瑞安市东风变速机厂
In January 1990 establishment of Ruian City Dongfeng Speed Change Factory;

1990

1998

企业变更为—浙江通力变速机械有限公司
In 1998 the enterprise becomes to Zhejiang Tongli Speed Change Co.,Ltd;

9月产品荣获浙江名牌产品
In September 2004 FAMOUS PRODUCT OF ZHEJIANG PROVINCE

2004

企业变更为—浙江通力减速机有限公司
In 2005 the enterprise become to Zhejiang Tongli SpeedReducers Co.,Ltd;

2005

11月并购原瑞安二轻机械厂
In November 2005 we invested more build 41mus Tongli Industry Filed in Linyang Industry Field

1月“通力”牌商标荣获浙江省著名商标
In January 2006 FAMOUS BRAND OF ZHEJIANG PROVINCE

2006

6月荣获国家火炬计划重点高新技术企业
In June 2006 STATE KEY HIGH-TECH ENTERPRISE

企业晋升为全国无区域公司
—中国通力减速机有限公司
In 2007 we began to plan how to go on the market;

2007

6月技术中心通过“浙江省企业技术中心”认定
2007 June through the “center of technology of Zhejiang province enterprise technology center”

12月变更为
“浙江通力重型齿轮股份有限公司”
In December 2008 we set up Zhejiang Tongloi Heavy Gear Share Co.,Ltd.

2008

3月总投资4.2亿元“风力发电传动齿轮箱”项目基地开工建设
In March 2008 we invested 200,000,000RMB to build 50mus base production area of wing electricity generator gearboxes in Feiyun Economic area;

2010

10月荣获国家级高新技术企业
In 2010 October won the national high and new technology enterprises

获得瑞安市市长质量奖
Year 2012 obtained Rui'an Mayor Quality Award

2012

浙江省民营科技创新奖
Zhejiang Private Technology Innovation Award for year 2012

浙江省信用管理示范企业
Zhejiang Credit Management Model Enterprise for year 2013

2013

2014

获得“中国驰名商标”称号
Year 2014 obtained “China Famous Brand” title

企业简介 BRIEF INTRODUCTION

浙江通力重型齿轮股份有限公司（原通力减速机有限公司）创建于1990年，是一家从事减速机（齿轮箱）研发、制造、销售及服务的国家高新技术企业。经过二十五年的稳健发展和技术积累，通力已逐步壮大成为中国减速机行业公认的知名企业，在技术、装备、产品性能等方面均处于国内领先水平。近年来，通力参与制订2项“工业齿轮箱”产品国家标准，并作为发起单位之一负责起草“中国齿轮行业中小功率工业通用减速机”系列行业标准；拥十几项核心技术专利，自主研发十一个系列减速机（齿轮箱）产品，其中五个系列产品分别被列为国家重点新产品和国家火炬计划项目。

通力主导产品通用减速机、重载齿轮箱广泛适用于钢铁冶金、煤矿、电力、水泥、石油化工、筑路、环保、制药、起重运输、啤酒饮料机械等国民经济的支柱产业领域。先后为上海宝钢、鞍钢、江南造船、振华港机、胜利油田、京沪高铁、京广高铁、青藏铁路、中央电视台春晚舞台设备等国内大型企业及国家重点工程项目提供高性能的配套减速机，并出口东南亚、南美、中东等国家和地区，获得国内外众多客户的首肯和赞许。

Zhejiang TONGLI Heavy Gear Co., Ltd Originally known as TONGLI Gearbox Co.,Ltd is a professional company which dedicated in researching & developing (R&D), manufacturing and marketing transmission equipments, such as general gear units, wind power generation gearbox and heavy gearbox.

Currently our main products are Helical gear reducer, Rigid tooth flank gearbox, Spiral bevel gear reducer, Worm gear reducer, Planetary gear reducer and sort eleven series products. Two of those series products are included as National Key New Product and National Torch Plan Project respectively. Our products are widely applied in both light and heavy mechanical transmission fields such as lifting

transportation, mining machinery, engineering construction, food packaging, petroleum and petrochemical, pharmaceuticals, textile dyeing, rubber and plastics, environmental protection equipments, etc.

Our company has the rights of self-managed import and export, and established sales branches in Beijing, Wuhan, Shenyang, Guangzhou, Herei, Shanghai, Xi' an, Wuxi, Chengdu, Ji' nan and Zhengzhou those center cities regional. Hence, the marketing network all over the country. Good and standardize sales and after sale service both channels provides a reliable guarantee in marketing development and sales growth in long run.





- 1、中共浙江省委书记夏宝龙、省委常委、省委秘书长赵一德、副省长毛光烈接见获得第四届“浙江省中国特色社会主义事业建设者”并给获奖者颁奖。
(小图)夏宝龙书记(前排左二)、赵一德秘书长(前排左一)、项建忠董事长(三排右一)、马云董事长(二排左二)。
- 2、浙江省政协副主席汤黎路在温州市人大副主任孟建新(时任温州市副市长)、瑞安市常务副市长方晖陪同下在公司调研。
- 3、温州市政协主席包哲东一行在瑞安市政协主席白一帆陪同下在公司调研。
- 4、温州市委常委、常务副市长陈作荣在瑞安市委书记陈建明陪同下在公司调研。

- ①
- ②
- ③
- ④



- 1、 Secretary of the CPC Zhejiang Provincial Xia Baolong, Provincial Committee and Provincial Secretary General Zhao Yide, Vice Governor Mao Guanglie present an award for the fourth "Zhejiang Builder for the Socialist cause with Chinese Characteristics".
- 2、 Vice Chairman of CPPCC Tang Lili came for company research accompanied by Wenzhou Municipal People's Congress Deputy director Meng Jianxin (when he was vice mayor of Wenzhou) and Rui'an Vice Mayor Fang Hui.
- 3、 Wenzhou Municipal CPPCC Chairman Bao Zhedong with a group of officer and accompanied by Rui'an Municipal CPPCC Chairman Bai Yifan came for company research.
- 4、 Wenzhou Municipal Committee, Vice Mayor Chen Zuorong accompanied by Rui'an Municipal Party Committee Secretary came for company research.



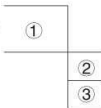
中共中央书记处书记、中央纪委副书记赵洪祝(时任浙江省委书记)接见公司董事长项建忠一行。
Chairman Xiang Jianzhong as secretary of the CPC Zhejiang Provincial Committee Zhao Hongzhu examines

通力成长的每一步,都离不开各级领导如丝丝春雨般的温馨关怀。帮助谋划发展,鼓舞信心,解决发展中遇到的实际问题 and 难处……指导通力在发展的道路上阔步向前!

In every step of its growth, Tongli has received warm concerns from the leaders at various levels, who have helped in company development, encourage confidence, and solve the problems and difficulties in the development steps.



- 1、浙江省副省长毛光烈在温州市人大副主任孟建新（时任温州市副市长）陪同下来公司调研。
- 2、中共浙江省委常委、省委秘书长赵一德（时任温州市市长）和董事长在一起。
- 3、中共瑞安市委书记陈建明一行在公司调研。



中央电视台“坚定信心，应对挑战”专题报道组采访公司董事长

CCTV-1 is reporting our chairman about "Strengthen their confidence and meet the challenges"



媒体聚焦
Media Focus

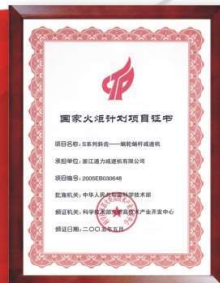
通力的成长就像是一棵幼苗，需要阳光和雨露的滋润。正是有了从地方、省、中央等媒体和社会各界对通力的呵护与关注，才给通力插上腾飞的翅膀。

Just like tender seedlings, the growth of Tongli needs The nutrients of rain, dew, and sunshine. It is just because of the care and attention from the mass media at local, provincial and central governments that Tongli has been given The soaring wings.

通力的荣誉榜上记载着20多次国家和省市科技进步奖10多项重大荣誉称号，3项高新技术产品。通力的成长是不断挑战自我，超越自我，向技术、质量、管理之颠不断攀登的探索之路。

In the Honor Roll of Tongli, over 20 scientific progress awards at municipal, provincial and national levels have been recorded, as well as over a dozen honorary titles and 3 high-and-new technical products. The growth of Tongli is an ever exploring process, in which it continues to conquer itself, challenge itself and promote itself, and strives to scale on the summit of technology, quality and management.

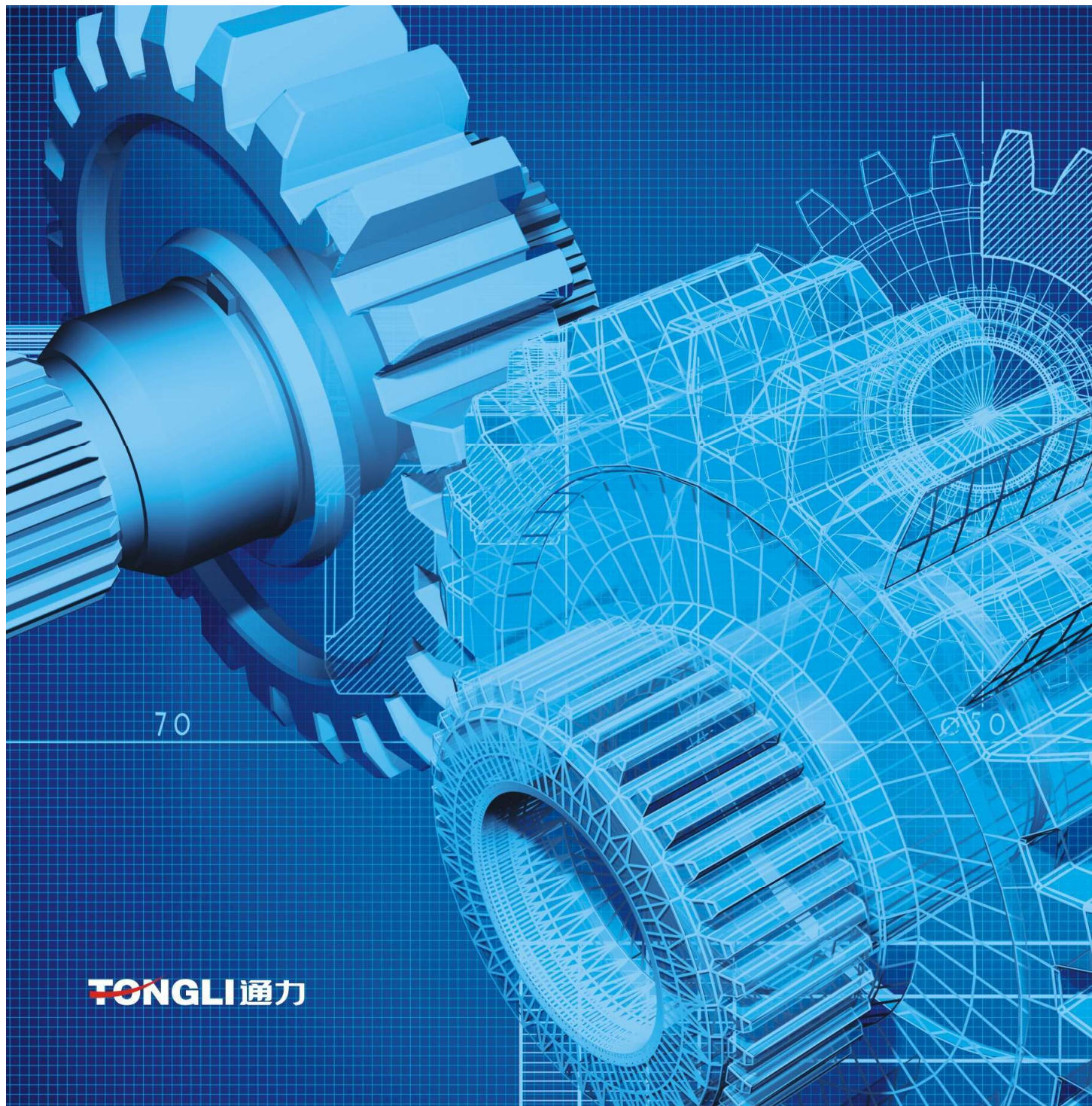




我们先后获得
 全国机械行业文明单位
 中国重型机械工业协会 理事单位
 中国通用机械工业协会
 中国农业机械工业协会-风力机械分会会员
 中国齿轮专业协会会员
 中国农业银行AAA资信等级
 AAA级纳税信用等级

We have obtained
 Unit of civilization of countrywide mechanical
 industry
 China Heavy Machinery Industry Association
 governing units
 China General Machinery Industry Association
 China Agricultural Machinery Industry
 Association – wind machinery branch members
 China gears Association member
 Agricultural Bank of China AAA credit ratings
 AAA ratepaying credit grade





TONGLI 通力

科技

TECHNICAL CHAPTER

通力秉承
把握前沿技术
追求卓越产品
实现高精尖优
的研发理念
十多年来通力取得了一系列重要科研成果；

创新 · 成就 · 卓越

Innovation & success & achievement

公司实施“差异化”的技术开发战略，本着“专业化、模块化、系列化”的开发宗旨，不断规范和完善技术创新体系，二十年来持之以恒，创新积累十一大系列的拥有自主知识产权的齿轮箱。风电齿轮箱的成功开发更是十年磨一剑的成果。

The company implemented the "differences" of the technological development strategy, with the spirit of "professionalism", modularization, serialization development purposes, continuous to standardize and improve the system of technical innovation, twenty years to persevere, accumulate with eleven series which obtain independent knowledge rights of the gearbox wind power gearbox development is another successful achievement for past 10 years.



技术中心一角
Technical department center



为解决生产、科研中的技术难题，培养和引进高素质人才，提高企业新产品研发能力和核心竞争力。通过搭建合作平台，沟通合作信息，广泛开展与高校、科研院所“牵手”、“联姻”等技术和智力合作。使一批智力共建项目取得了重要成果，提高了企业自主创新能力。

To help solve the technical problems in production and technology research, and cultivate and bring in high quality talents, and topromote the research ability of new products and nuclear competitive power,Tongli has conducted hand-in-hand technical and intellectual cooperation with cresearch institutes and institutions of higher learning, such as Tsinghua University, Zhejiang University, Northeastern University, and Heavy-duty Machinery Research Institute of China. This way, a series of intellectual building projects have made important achievements, thus enhancing the self create a ability of the corporation.



实践基地
Practice base

技术交流
Technical cooperation

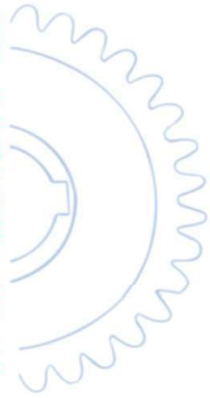




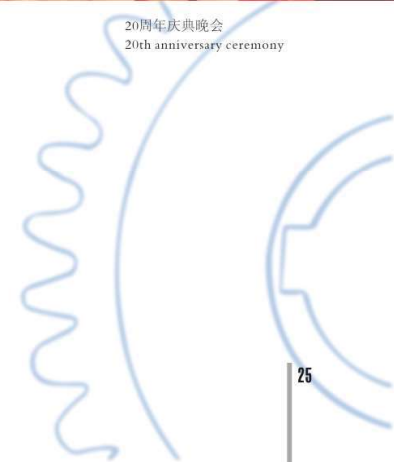
文化

CULTURE CHAPTER

通力由小到大，
由弱到强持续稳健的发展模式
是通力人同舟共济、共同拼搏的结果；
是健全的企业机制
丰富的文化机制的浓缩
从员工的工作、学习、生活
通力的决策者都始终如一的做到最好
由此而形成的员工之间结协作
及员工与公司共荣辱的核心价值观得以健康发展。



20周年庆典晚会
20th anniversary ceremony



①	
②	③
	④
	⑤

- 1-2、颁奖晚会
- 3、“七一”建党节，感受爱国主义教育
- 4、瑞安市青年职工技能大比武现场
- 5、员工免费健康体检

企业文化 ENTERPRISE CULTURE

良好的心态，愉悦的心情，从通力员工脸上和工作的状态中都能完全感受的到。组织员工旅游、开展运动会、与社会各界进行活动交流，在活动中放松了心情；在活动中增进了了解；在活动中增强了向心力。

From the appearances of TONGLI's employees and their working status, you can see the mentality and pleasant attitude. Every year, TONGLI organizes employees tour, hold 'sports day' and socialization activities with different levels of society regularly to help relaxation, getting to know one another better and as well as improves friendship.



“为社会承担责任，为股东创造利润，为员工增加收入”。在为股东、为员工创造财富的同时，也时时不忘自己的社会责任。从台风肆虐的地方，从家庭贫困的学子，从地震灾区，到为社区修路、建桥，通力都在尽着自己的一份心力。

“Shoulder responsibility for the society; create profit for the shareholders; increase income for the employees” You can see these slogans in every eye-catching place at Tongli. At the same time to create wealth for the shareholders and employees, Tongli has never forgotten its social responsibilities. TONGLI has tried their best in helping different areas as of people such as typhoon affected area, poor families students, Earthquake stricken places and building roads.

①

- 1、无锡之旅
- 2、厦门之旅
- 3、拔河比赛
- 4、庆五一、五四青年“篮球比赛”

②

③

④



浙江通力群策群力行动学习工作坊
Zhejiang Tongli Team Work and Action Learning workshop



通力公司综合管理提升项目启动会
Tongli Corporation integrated management improvement project startup.



生产管理培训
Training of production management



企业的发展与每一位员工的成长密不可分，通力积极地为员工提供学习的平台和机会，帮助每一位员工成长。针对不同层次的员工，通过一系列的专业培训，全面提升员工的文化和专业素质。

The growth of every employee is closely linked to the development of an enterprise. Tongli has tried its best to provide its Employee with the platform and opportunity of study to help them develop. Aiming at employees at different levels and Through a series of professional training, it has comprehensively enhanced the cultural and professional quality of every employee.

2014年“质量月”活动动员大会
Year 2014 "Quality Month" Mobilization Meeting



广泛参与国际合作和技术交流，将国内外产品的低成本、可靠性、先进性作为我们赶超目标。在设计开发中构建技术、质量、成本优势，辅以更人性化、专业化的技术支持，为合作伙伴提供整套的技术服务方案，真正实现人与技术的和谐。

Tongli has made an extensive technical cooperation and exchanges both at home and abroad and taken the cost-low, reliable and advanced products as the catching up and surpassing target. In the design and development of products, we have tried to establish the superiority in technology, quality and cost, supported by humane and special technologies so as to provide our partners with a whole set of technical service plan to realize the harmony between human-being and technology.



通力合作 携手共赢



董事长项建忠拜会香港合和实业胡应湘主席
Chairman Xiang Jianzhong visited the Hongkong
Hopewell Holdings Limited's president Hu Yingxiang.



TONGLI 通力



数控磨齿车间

设备

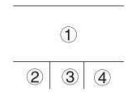
EQUIPMENTS CHAPTERS

工欲善其事
必先利其器
要想使企业有发展力
就必须拥有一流的
国际先进的设备
确保通力产品卓越品质

生产设备 PRODUCTION EQUIPMENT

公司拥有各类机械加工、检测设备300余台，其中包括引进德国产ZPI25、ZP20数控磨齿机、AZA、NZA、ZB磨齿机、韩国斗山立式加工中心，锥齿轮研齿机、数控弧齿锥齿轮铣齿机、数控插齿机、数控龙门镗铣床、一大批高精尖加工设备，为生产高品质的传动产品提供了保障。

The corporation has possessed over 300 sets of machining and testing equipments which including ZPI25 and ZP20 digital gear grinding machines from Germany, AZA, NZA, ZB gear grinding machines, Korean upright processing center, national cone gear abrader, digital arc-cone gear miller, digital gear shaper, and digital planer-type boring milling machine. These machines have greatly guaranteed to manufacture of high quality transmission products.



- 1、XKA2120X60数控龙门镗铣床
CNC double column boring and milling machine
- 2、磨齿车间
Gear grinding workshop
- 3、加工中心车间
Processing workshop
- 4、滚齿车间
Gear hobbing workshop

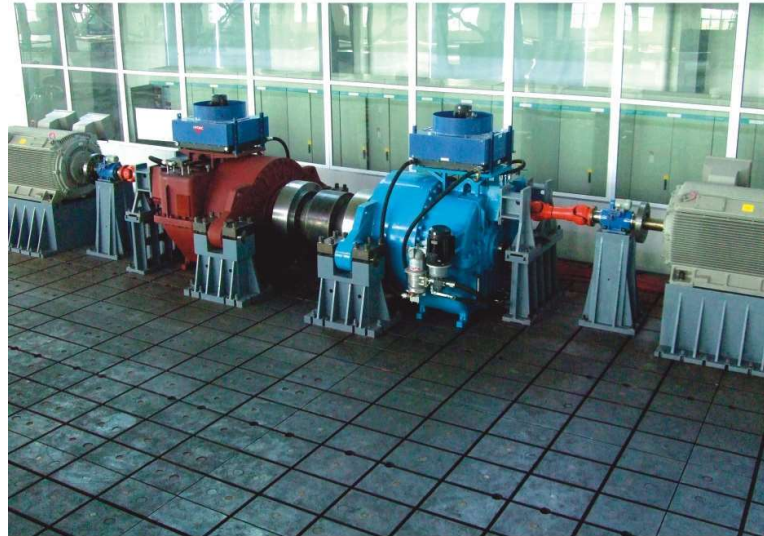


- 1、ZP20,ZPI25数控齿轮成型磨齿机群
CNC Gear grinding machine
- 2、数控弧齿锥齿轮磨齿机
CNC Spiral Bevel Gear Grinding machine
- 3、TK6516A数控刨台卧式镗铣床
CNC planer horizontal milling and boring machine
- 4、数控齿轮成型磨齿车间
CNC Gear grinding machine workshop

检测设备 TESTING EQUIPMENT

公司在全国同行业中率先通过了ISO9000国际质量体系认证，配置了CZ450齿轮整体误差测量机、三坐标测量仪、德国产齿轮检测仪机和万能工具显微镜等最先进的检测设备，并拥有一支经专职培训的质量管理和质量检测人员。

TONGLI has been the first of the same field in China to pass the ISO9001 Quality System Authentication. It has purchased the advanced testing equipment for its products, such as CZ450 gear overall error measuring machine, three coordinates measuring machine, German gear testing instrument and universal tool microscope. In addition, it also possesses professionally trained personnel for quality control and testing. These are the prerequisite in our effort to seek for the zero defects of our products.



工欲善其事 必先利其器

- | | |
|---|---|
| ① | ② |
| | ③ |
| | ④ |

- 1、重载齿轮箱试验中心
Heavy gearbox testing center
- 2、齿轮测量仪
Gear detector
- 3、三坐标测量仪
Coordinate measuring machine
- 4、4×3×2三坐标测量仪
4×3×2 Coordinate measuring machine

- | | |
|---|---|
| ① | ③ |
| ② | |

- 1、通用减速机试验中心
Universal gear testing center
- 2、德国产齿轮检测仪
Gear measuring apparatus
- 3、万能工具显微镜
Universal microscope

TONGLI 通力



产品

PRODUCTS CHAPTERS

通力统一的标准

构成了特有的模块化组合体系

以其多样化的选择

为每个传动应用提供最佳方案

产品广泛应用于钢铁冶炼、起重、输送、称重、电力、石油、建材、筑路等行业
并在多项国家及省、市重点工程项目中应用。

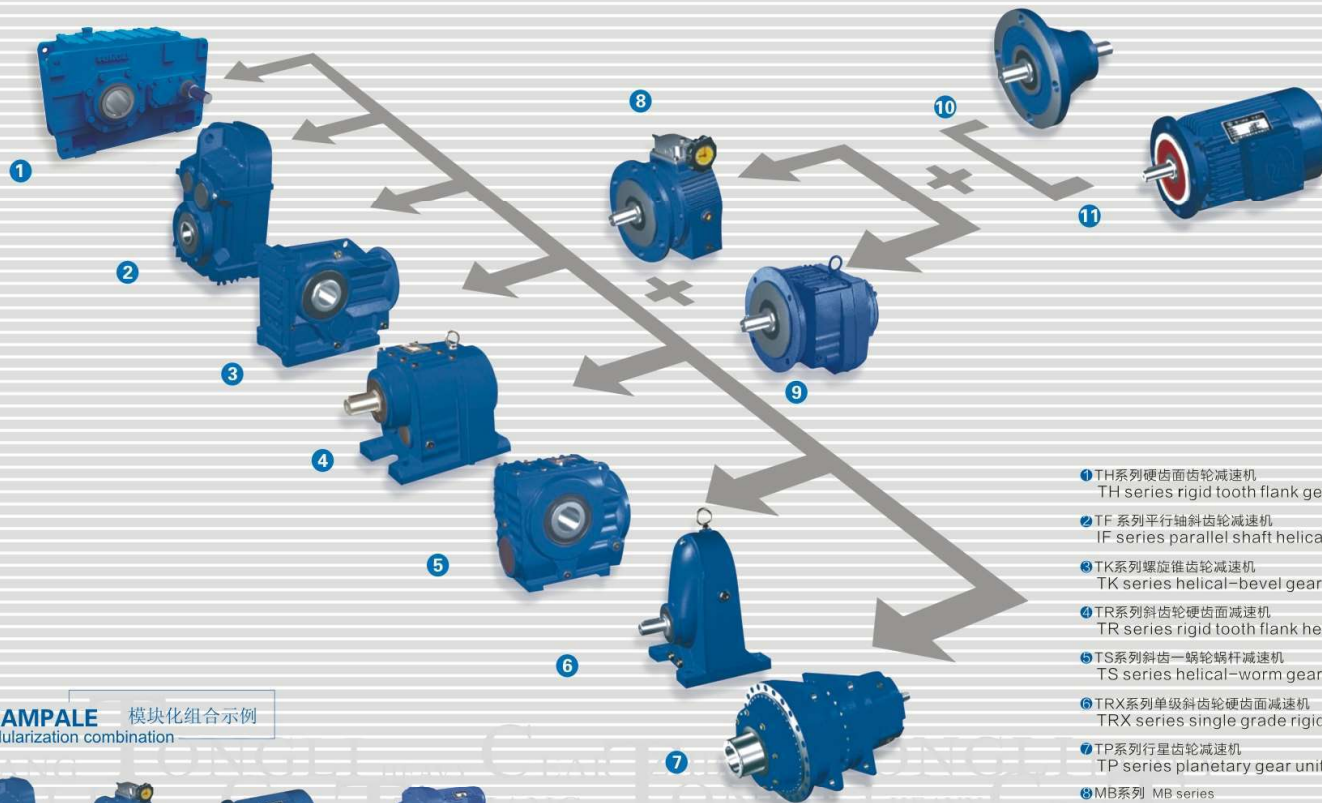
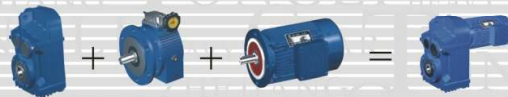
通力产品
模块化组合体系

"TONGLI" PRODUCT
MODULARIZATION
COMBINATION
SYSTEM.

通力统一的标准件构成了特有的模块组合体系，为每个传动应用都提供最佳方案，模块化组合体系，以其多样化的选择，为您提供千万种的组合搭配，您一定能为自己的传动需求找到一种最理想的解决方式。

The uniform standard components of Tongli company has constituted unique module combination system, provide best plan for each transmission application, Tongli modularization combination system, by its diverse choice, provide more than ten million kind of combination matches for you, certainly you can find one ideal solution way for own transmission request.

EXAMPALE 模块化组合示例
modularization combination



- ① TH系列硬齿面齿轮减速机
TH series rigid tooth flank gearbox
- ② TF 系列平行轴斜齿减速机
TF series parallel shaft helical gear reducer
- ③ TK系列螺旋锥齿减速机
TK series helical-bevel gear reducer
- ④ TR系列斜齿硬齿面减速机
TR series rigid tooth flank helical gear reducer
- ⑤ TS系列斜齿-蜗轮蜗杆减速机
TS series helical-worm gear reducer
- ⑥ TRX系列单级斜齿硬齿面减速机
TRX series single grade rigid tooth flank helical gear reducer
- ⑦ TP系列行星齿减速机
TP series planetary gear units
- ⑧ MB系列 MB series
- ⑨ TR系列减速机 TR series gear reducer
- ⑩ 输入部件 Input part
- ⑪ Y2系列交流电机 Y2 series alternating-current machine



TF系列平行轴斜齿轮减速机

TF series Parallel Shaft Helical Gear Reducer

TF系列平行轴斜齿轮减速机具有体积小、重量轻、传递扭矩大、起动平稳、低损耗、安装方式多样,输入、输出灵活等特点。

TF series parallel shaft helical speed reducer with the feature of small volume, light weight, heavy transmission torque, steady startup, low consumption, various mounting types and flexible in input and output etc..

输出转速 / OUTPUT SPEED	0.04 ~ 373r/min
输出转矩 / OUTPUT TORQUE	高至18000Nm UPTO 18000Nm
输入功率 / INPUT POWER	0.18~200kW



TR系列斜齿轮硬齿面减速机

TR series Rigid Tooth Flank Helical Gear Reducer

TR系列斜齿轮硬齿面减速机具有通用性强、组合性好、承载能力高的一种减速机。

TR series rigid tooth flank helical speed reducer with the feature of high versatility, good combination and advantage in set transmission device.

输出转速 / OUTPUT SPEED	0.05 ~ 1108r/min
输出转矩 / OUTPUT TORQUE	高至18000Nm UPTO 18000Nm
输入功率 / INPUT POWER	0.18~160kW



TK系列螺旋锥齿轮减速机

TK series Helical-bevel Gear Reducer

TK系列螺旋伞齿轮减速机其轮齿的齿线为: 圆弧重叠系数大、承载能力高、磨损均匀、噪声小、传动平稳,最适合用于传递两相交轴之间的回转运动。

The tooth profile of TK series helical-bevel speed reducer is an arc, and the series has feature of large overlap coefficient, high loading capacity, even abrasion, low noise and smooth transmission, which is suitable for vertical direction transmission.

输出转速 / OUTPUT SPEED	0.04 ~ 265r/min
输出转矩 / OUTPUT TORQUE	高至50000Nm UPTO 50000Nm
输入功率 / INPUT POWER	0.18~200kW



TS系列蜗轮蜗杆减速机

TS series HHelical-worm Gear Reducer

TS系列蜗轮蜗杆减速机除具有常规特性外,该机还采用了斜齿蜗轮形式,使结构更加合理化。

Besides the routine characteristics, TS series helical-worm speed reducer adopts the helical gearworm wheel type to make the structure more reasonable. The series not only has

输出转速 / OUTPUT SPEED	0.16 ~ 147r/min
输出转矩 / OUTPUT TORQUE	高至4000Nm UPTO 4000Nm
输入功率 / INPUT POWER	0.18~22kW



SJ系列蜗轮丝杆升降机

SJ series Worm Screw Elevators

SJ系列蜗轮丝杆升降机广泛应用于机械、冶金、建筑、水利设备等行业,具有起升、下降及借助辅件推进、翻转及各种高度位置调整等诸多功能。

SJ series worm screw elevators is widely applied in industries such as machinery, metallurgy, construction, hydraulic equipment, etc. and has many functions such as lifting and pushing and turning with the help of accessories or adjusting height and position etc...

输出转速 / OUTPUT SPEED	75 ~ 3600r/min
输出转矩 / OUTPUT TORQUE	高至26050Nm UPTO 26050Nm
输入功率 / INPUT POWER	0.19~16.27kW



Z系列螺旋锥齿轮减速机

Z series Spiral Bevel Gear Units

Z系列螺旋锥齿轮减速机可以正反运动,采用多方向整体式轴输入、输出设计结构。

Z series spiral bevel speed reducer can rotate in either clockwise or anticlockwise and adopt a structure design of multi direction and integrated input and output shaft.

输出转速 / OUTPUT SPEED	3 ~ 1450r/min
输出转矩 / OUTPUT TORQUE	高至3677Nm UPTO 3677Nm
输入功率 / INPUT POWER	0.014~335kW

TB、TH系列硬齿面齿轮减速机

TB、TH series Rigid Tooth Flank Gearbox



TH、TB硬齿面齿轮减速机是全新型硬齿面减速机，具有大转矩范围，采用单元结构模块化设计，可卧式安装也可立式安装。

TH、TB helical tooth/umbrella toothskewed tooth series high power speed reducer is brand-new rigid tooth flank gear units with wide application areas, which has the feature of largcal mounting.

输出转速 / OUTPUT SPEED	1.7 ~1200r/min
输出转矩 / OUTPUT TORQUE	高至900000Nm UPTO900000Nm
输入功率 / INPUT POWER	1.5~4946kW

TP系列行星齿轮减速机

TP series Planetary Gear Units

TP系列行星齿轮减速机采用渐开线行星齿轮传动，合理利用内、外啮合，功率分流。

The TP series planetary speed reducer adopts the involute planetary gear trans-mission with inner mesh, outer mesh and divided power employed reasonably.



输出转速 / OUTPUT SPEED	0.19 ~60r/min
输出转矩 / OUTPUT TORQUE	高至2600000Nm UPTO2600000Nm
输入功率 / INPUT POWER	0.4~12934kW



GFT行走行星减速机

GFT Planetary Gearbox for Travel Drives

液压静态传动装置GFT Series 是齿轮或者链条传动的车辆和其他移动设备理想的驱动装置。除此之外，凡有运动，转动和旋转的地方均可适用。

GFT: hydraie static transmission GFT series is ideal driving dence for gear or from of chain transmission vehicles and other mobile devices. In addition, whichever with motion, mormg and rotation can be applied with this.

GFB回转行星减速机

GFB Planetary Gearbox for Swing Drives

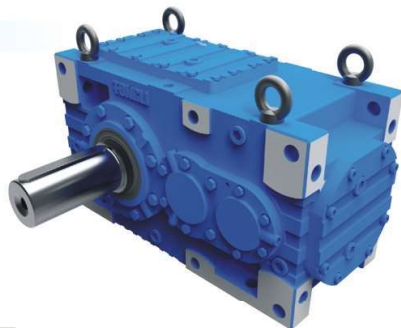
回转减速机在各式挖掘机，起重机，船舶卸货装置，林业设备，以及凡有旋转运动的设备中得到广泛的应用。

GFB: swing gears gfb series are applied in different kinds of excavtors, cranes, ship uploading devices and foretny equipments. In addition, it also widely applied in all applications where swing operations conducted.

TMC系列减速机

TMC系列减速机具有轻便、紧凑的特点，整体箱体结构使产品刚性高，进一步提高减速机承载能力。产品应用领域：建材、起重、散料输送、化工、搅拌、食品、木材和造纸、破碎及环保等众多行业。

TMC series gearbox with the features of light weight and compact structure and also, the whole housing structure helps to improve the rigidity of product and further increase the load capacity. The modularization design plan and counter to special working condition plan are suitable for various requests.

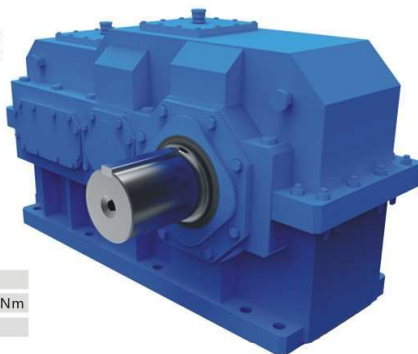


输出转速 / OUTPUT SPEED	15.5 ~ 267.1rpm
输出转矩 / OUTPUT TORQUE	高至66000Nm UPTO66000Nm
输入功率 / INPUT POWER	7.05~1066kW

TML系列减速机

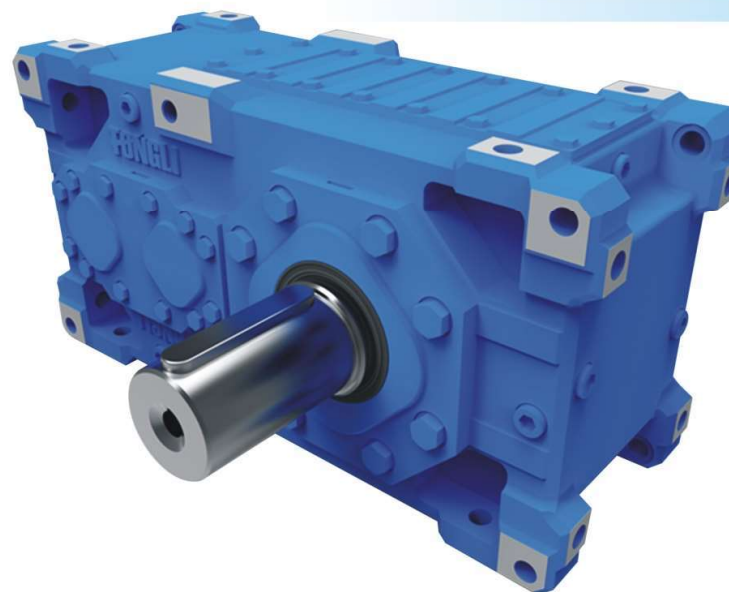
TML系列减速机是大型的齿轮产品，具有更大的承载能力。钢板焊接箱体，保障产品坚固可靠和灵活的特殊改造功能。产品应用于矿山、金属、起重、运输等大型的工业领域和超高扭矩的工作场合。

TML series gearbox are large gear product with greater load capacity the steel plate welding the housing to ensure the product with special transforming functions which became more form and reliable and flexible.



输出转速 / OUTPUT SPEED	5.5 ~ 332.5rpm
输出转矩 / OUTPUT TORQUE	高至1200000Nm UPTO1200000Nm
输入功率 / INPUT POWER	110~9234kW

TX系列减速机



TX系列减速机基于对称型可翻转及多面安装箱体设计、模块组合的理念，使得产品具有更多安装灵活性及用途多样性。该系列减速机有TXH平行轴类型及TXB直交轴类型传动。产品广泛应用于：冶金、矿山、建材、起重、输送、化工、能源、食品、塑料、环保等机械领域。

TX base on symmetrical reversible and multiple installation cabinet designs , modularization combination philosophy concept, tx series gearbox helps the product with more flexibility of installation methods and diversifying of applications .

输出转速 / OUTPUT SPEED	2.3 ~ 290rpm
输出转矩 / OUTPUT TORQUE	高至475000Nm UPTO475000Nm
输入功率 / INPUT POWER	4~8550kW

棕榈油专用减速机



主起升减速机

Main Lifting Gearbox



十五辊矫直机用减速机

Fifteen roller straightening machine



斗式提升机用减速机

The speed reducer for Bucket elevator



胶带过滤机用减速机

The speed reducer for belt filter



刮板机用减速机

Scrapers Machine



板式给料机用减速机

Plate feeder



斗轮堆取料机用减速机

Bucket wheel Machine



起重机用减速机

Crane



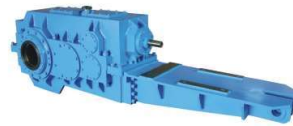
化纤化工用减速机

Chemical fiber chemical reducer



曝气机专用减速机

Aeration machines



拉矫机用减速机

Straightening Machine



冷轧机用主传动减速机

Main Lifting Gearbox



冷轧机用卷取减速机

Coiler gear reducer



冷轧机用开卷机减速机

For cold mill uncoiler gear reducer

面对风起云涌的市场竞争，为满足客户日益增强的需求，通力始终坚持以“服务动心，品质动人”的服务理念。在全国各大中心城市建立销售服务网点，形成了覆盖全国的销售和服务网络。通过参加各类机械专业展会，在全国各地开展客户座谈会，收集客户信息，倾听客户心声，解决客户困难。

Faced with fierce market competition, Tongli has been all along adhering to the service concept of touching the people with service and quality to meet the ever increasing demand of customers. Up to now, they have established 7 major sales and service networks in China, covering every corner of the country. Through the participation of various machinery and special exhibitions, the Tongli people hold discussions among customers, in which to collect customers' information, listen to customers' aspiration, and help solve their problems.



上海风电展览会
Wind power generation exhibition of Shanghai



上海PTC展览会
PTC Exhibition of Shanghai



2011经销商会议
Customer representative symposium in Beijing area



北京客户座谈会
Customer representative symposium in Beijing area



西安区域客户代表座谈会
Customer representative symposium in Xi'an area



西南区域客户代表座谈会
Customer representative symposium in southwest area



江苏区域客户代表座谈会
Customer representative symposium in Jiangsu area



上海区域客户代表座谈会
Customer representative symposium in Shanghai area



广告
Advertisement



武汉区域客户代表座谈会
Customer representative symposium in Wuhan area



IRON AND STEEL AND
钢铁冶炼行业 **METALLURGY EQUIPMENT**

钢铁冶金设备
Metallurgical equipment



拉丝设备
Drawing machine



起重、输送、称重行业
LIFTING、CONVEYOR、WEIGHING EQUIPMENT

应用领域 **APPLICATION FIELDS**

电力、石油化工行业
POWER、PETROCHEMICAL EQUIPMENT



建材、筑路行业
MATERIALS、ROAD EQUIPMENT



展望

走向世界

实现我们的目标，是通力人矢志不渝的任务

走向未来

完成我们的使命，是通力人孜孜不倦的追求

Towards the world and to achieve the goal
are Tongliese task contineous

Towards the future and to accomplish the mission
are Tongliese seek contineous